

# VICSES Wonthaggi

## Update from the Emergency Services Infrastructure Authority

### Project Update | March 2021

- Upon project completion, the VICSES Wonthaggi Unit will be relocated to its new facility at 89 White Road, Wonthaggi.
- A schematic design was developed to incorporate the Unit's preferences, which received approval by the Sector Coordination Group in August 2019.
- ESIA acknowledges that some time has passed since, and the project team are now proceeding with preparations for the town planning application.
- Site due diligence activities and reports have been reviewed and the operational communications requirements are currently being assessed with the assistance of VICSES HQ.

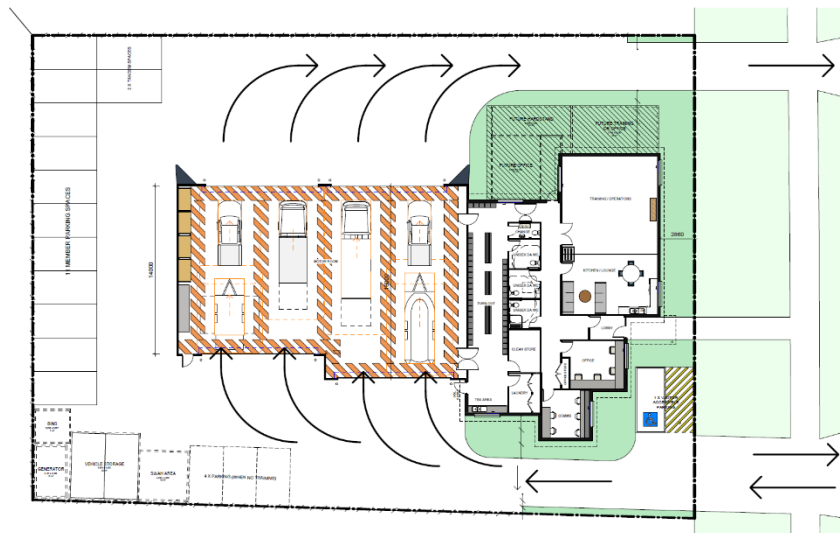


Figure 1: VICSES – Wonthaggi – Schematic design (Rev 10 – Confidential)

### Next Steps

- Town planning application to be developed and lodged.

### Project Timeline

#### Site Identification

Complete

#### Site due diligence

Completed

#### Concept, schematic design development

Completed

#### Town planning and zoning approval

Commenced

#### Detailed Design

To commence following planning application approval

#### Procure and appoint construction firm

Planning underway

#### Construction commences

Early 2022

#### Construction concludes

Late 2022

#### Handover of facility

Late 2022

# Schematic and detailed designs

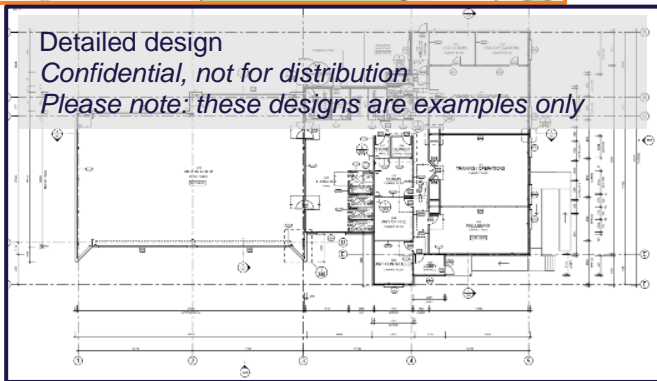
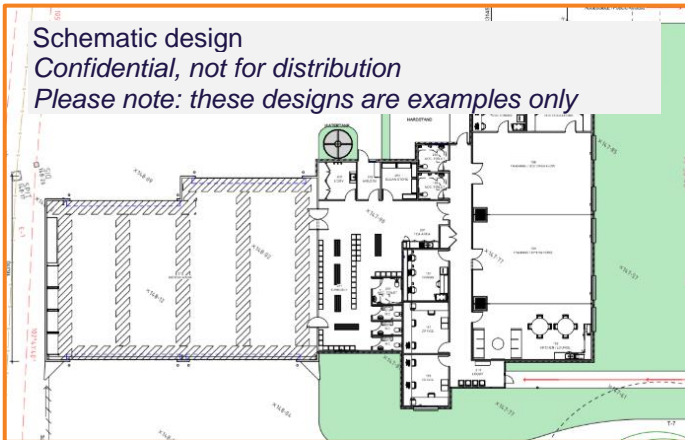
ESIA has previously explained concept designs, which are standardised layouts for all new VICSES unit facility types. However, not all VICSES units have the same responsibilities, so how do we accommodate these different requirements in your facility's design?

## Schematic design

Schematic designs apply the relevant concept design (standardised) to a specific site once it has been identified. Factors including land size, topography, street frontage, easements and planning zones and overlays are considered, in addition to the functional requirements of the unit.

The schematic design also considers site investigation reports (e.g. geo-technical, cultural, arborist etc.), which help to determine how the facility will be configured on the site and is part of preparing an initial forecast cost for the new unit.

This process of schematic design can take up to four months and, once finalised, provides documentation for issue as part of a planning permit application.



## Who has input into the design process?

The schematic and detailed design processes are a collaborative approach between ESIA, VICSES HQ and your Regional Manager. Regional Managers will work closely with their respective units to ensure functional requirements are met, and critical issues addressed. The specific facility designs are overseen by the Project Control Groups, with approval required from the Sector Coordination Group (SCG).

## Detailed design

The next phase is detailed design, which commences once a planning permit is issued, enabling any council requirements to be incorporated into the design.

Detailed design develops the schematic into drawings, plans and specifications and includes everything from site excavation (civil works) to the type of door handles, lighting, power points and furniture required.

This process is very comprehensive and can take up to four months. Once approved by the SCG, the documentation is released through a Request for Tender to source a suitable builder to construct the facility.

## Contact

[esiases@justice.vic.gov.au](mailto:esiases@justice.vic.gov.au)

## Website

[www.esia.vic.gov.au](http://www.esia.vic.gov.au)