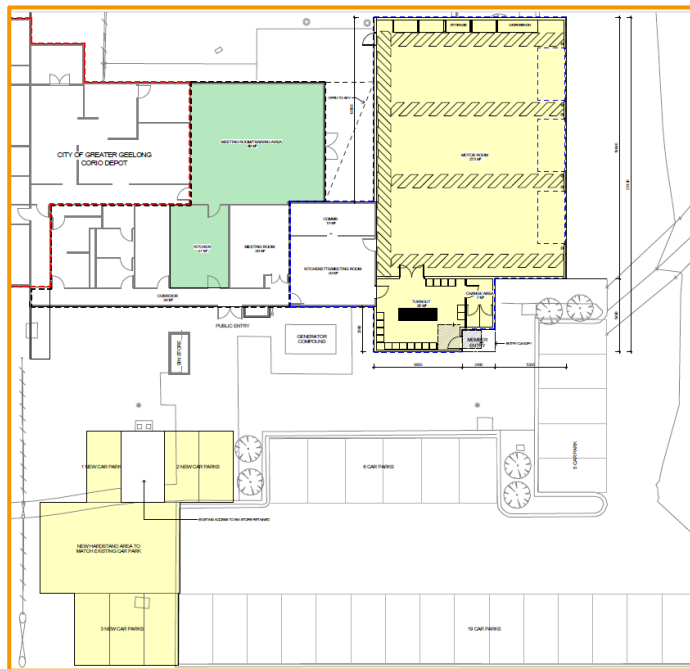


VICSES Corio

Update from the Emergency Services Infrastructure Authority

Project Update | March 2021

- The VICSES Corio facility will be extended and refurbished at the existing site at 299 Anakie Road, Lovely Banks.
- Since the Unit met with the VICSES CEO and ESIA A/Program Director in October 2019, a revised schematic design has been developed to incorporate the Unit's preferences, providing priority requirements such as additional motor bays and a turn-out room.
- ESIA acknowledges that some time has passed since, and the project team are now proceeding to detailed design.
- Site due diligence activities and reports have been reviewed and pre-application planning for a town planning permit is underway.



VICSES – Corio – Schematic design (Rev 11 – Confidential)

Next Steps

- Town planning application to be developed, including elevation drawings.
- Town planning application to be lodged.

Project Timeline

Site Identification

Complete

Site due diligence

Initial assessment completed – further investigation in progress

Concept, schematic and design development

Proceeding to detailed design stage

Town planning approval

Planning underway

Procure and appoint construction firm

Planning underway

Construction commences

Early 2022

Construction concludes

Late 2022

Handover of facility

Late 2022

Schematic and detailed designs

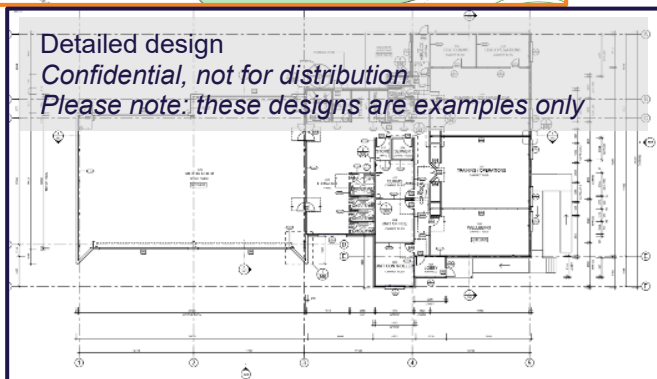
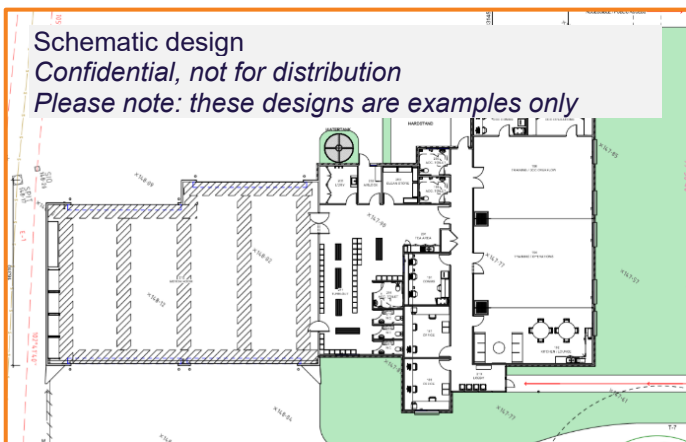
ESIA has previously explained concept designs, which are standardised layouts for all new VICSES unit facility types. However, not all VICSES units have the same responsibilities, so how do we accommodate these different requirements in your facility's design?

Schematic design

Schematic designs apply the relevant concept design (standardised) to a specific site once it has been identified. Factors including land size, topography, street frontage, easements and planning zones and overlays are considered, in addition to the functional requirements of the unit.

The schematic design also considers site investigation reports (e.g. geo-technical, cultural, arborist etc.), which help to determine how the facility will be configured on the site and is part of preparing an initial forecast cost for the new unit.

This process of schematic design can take up to four months and, once finalised, provides documentation for issue as part of a planning permit application.



Who has input into the design process?

The schematic and detailed design processes are a collaborative approach between ESIA, VICSES HQ and your Regional Manager. Regional Managers will work closely with their respective units to ensure functional requirements are met, and critical issues addressed. The specific facility designs are overseen by the Project Control Groups, with approval required from the Sector Coordination Group (SCG).

Detailed design

The next phase is detailed design, which commences once a planning permit is issued, enabling any council requirements to be incorporated into the design.

Detailed design develops the schematic into drawings, plans and specifications and includes everything from site excavation (civil works) to the type of door handles, lighting, power points and furniture required.

This process is very comprehensive and can take up to four months. Once approved by the SCG, the documentation is released through a Request for Tender to source a suitable builder to construct the facility.

Contact

esiases@justice.vic.gov.au

Website

www.esia.vic.gov.au