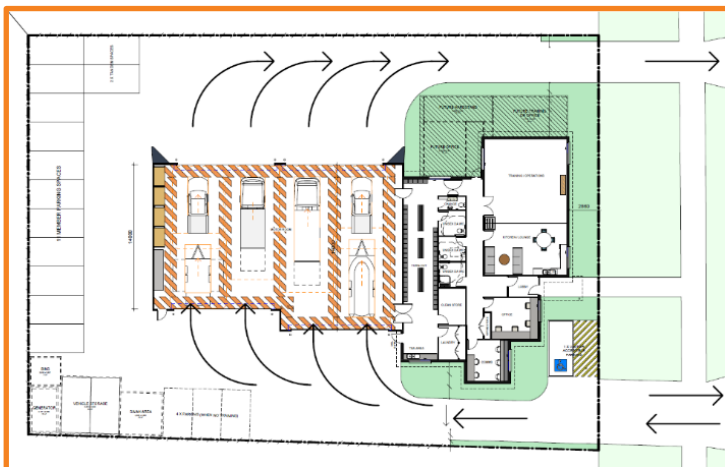


VICSES Wonthaggi

Update from the Emergency Services Infrastructure Authority

Project Update | November 2021

- Upon project completion, the VICSES Wonthaggi Unit will be relocated to its new facility at 89 White Road, Wonthaggi.
- Bass Coast Shire have provided formal exemption from the standard planning process, expediting the town planning and design phase.
- Detailed design has commenced and is nearing completion.
- ESIA and VICSES have engaged with the Unit to complete the Detailed design selections.
- A consultant has been engaged to design the sewer extension, water main and investigations for fire services designs.
- ESIA and consultants are working through minor design revisions to ensure all lessons learned from completed projects, Design Authority and Unit selections are incorporated into the For-Tender Documentation.



VICSES Wonthaggi – Schematic design (Rev 10 – Confidential)

Next Steps

- Finalise detailed design.
- Complete assessment of services designs.
- Commence tender documentation.

This update is current at time of distribution, however due to unforeseen circumstances, changes may occur.

Project Timeline

Site Identification

Complete

Site due diligence

Completed

Concept, schematic design development

Completed

Town planning and zoning approval

Completed

Detailed Design

In progress

Procure and appoint construction firm

February - June 2022

Construction commences

Mid 2022

Construction concludes

Early Q2 2023

Handover of facility

Q2 2023

Schematic and detailed designs

ESIA has previously explained concept designs, which are standardised layouts for all new VICSES unit facility types. However, not all VICSES units have the same responsibilities, so how do we accommodate these different requirements in your facility's design?

Schematic design

Schematic designs apply the relevant concept design (standardised) to a specific site once it has been identified. Factors including land size, topography, street frontage, easements and planning zones and overlays are considered, in addition to the functional requirements of the unit.

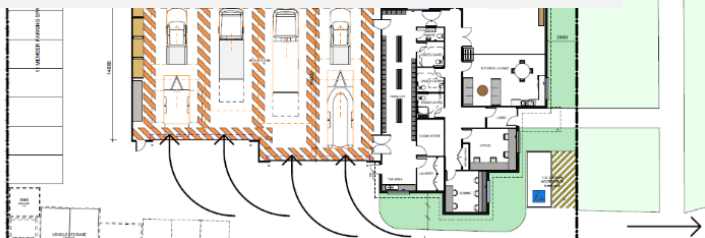
The schematic design also considers site investigation reports (e.g. geo-technical, cultural, arborist etc.), which help to determine how the facility will be configured on the site and is part of preparing an initial forecast cost for the new unit.

This process of schematic design can take up to four months and, once finalised, provides documentation for issue as part of a planning permit application.

Schematic design

Confidential, not for distribution

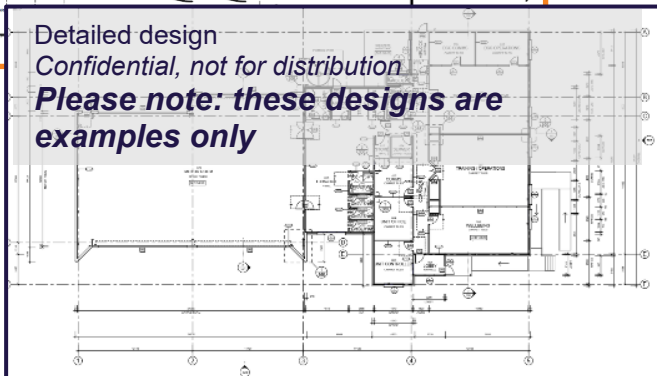
Please note: these designs are examples only



Detailed design

Confidential, not for distribution

Please note: these designs are examples only



Who has input into the design process?

The schematic and detailed design processes are a collaborative approach between ESIA, VICSES HQ and your Regional Manager. Regional Managers will work closely with their respective units to ensure functional requirements are met, and critical issues addressed. The specific facility designs are overseen by the Project Control Groups, with approval required from the Sector Coordination Group (SCG).

Detailed design

The next phase is detailed design, which commences once a planning permit is issued, enabling any council requirements to be incorporated into the design.

Detailed design develops the schematic into drawings, plans and specifications and includes everything from site excavation (civil works) to the type of door handles, lighting, power points and furniture required.

This process is very comprehensive and can take up to four months. Once approved by the SCG, the documentation is released through a Request for Tender to source a suitable builder to construct the facility.

Contact

esia@justice.vic.gov.au

Website

www.esia.vic.gov.au

This update is current at time of distribution, however due to unforeseen circumstances, changes may occur.