

VICSES Port Fairy

Update from the Emergency Services Infrastructure Authority

Project Update | November 2021

- The standardised design type for the VICSES Port Fairy project is a Type A hybrid, to be co-located with Country Fire Authority (CFA) Port Fairy.
- On 17 September 2021, the amended planning permit was submitted to Moyne Shire Council. The public advertising period has concluded with no objections received. The permit is anticipated to be issued shortly.
- ESIA has formally engaged a principal design consultant and the detailed design is in progress.
- On 21 and 22 October 2021, Heritage Consultants and representatives from the Eastern Marr Aboriginal Corporation completed an archeological salvage in accordance with the conditions of the Cultural Heritage Management Plan.
- The VICSES Port Fairy Unit Management Team (UMT) kindly provided support by mowing the grass in preparation for the salvage.



VICSES Port Fairy project site

Next Steps

- Preparation of Cost Plan by Quantity Surveyor.
- Detailed design drawings for review, endorsement and approval by stakeholders and governance groups.

This update is current at time of distribution, however due to unforeseen circumstances, changes may occur

Project Timeline

Site Identification

Complete

Site due diligence

Complete

Concept design

Complete

Schematic design

Complete

Town planning approval

In progress

Detailed design

In progress

Procure and appoint construction contractor

February - May 2022

Construction commences

June 2022

Construction concludes

Early 2023

Handover of facility

Early 2023

Schematic and detailed designs

ESIA has previously explained concept designs, which are standardised layouts for all new VICSES unit facility types. However, not all VICSES units have the same responsibilities, so how do we accommodate these different requirements in your facility's design?

Schematic design

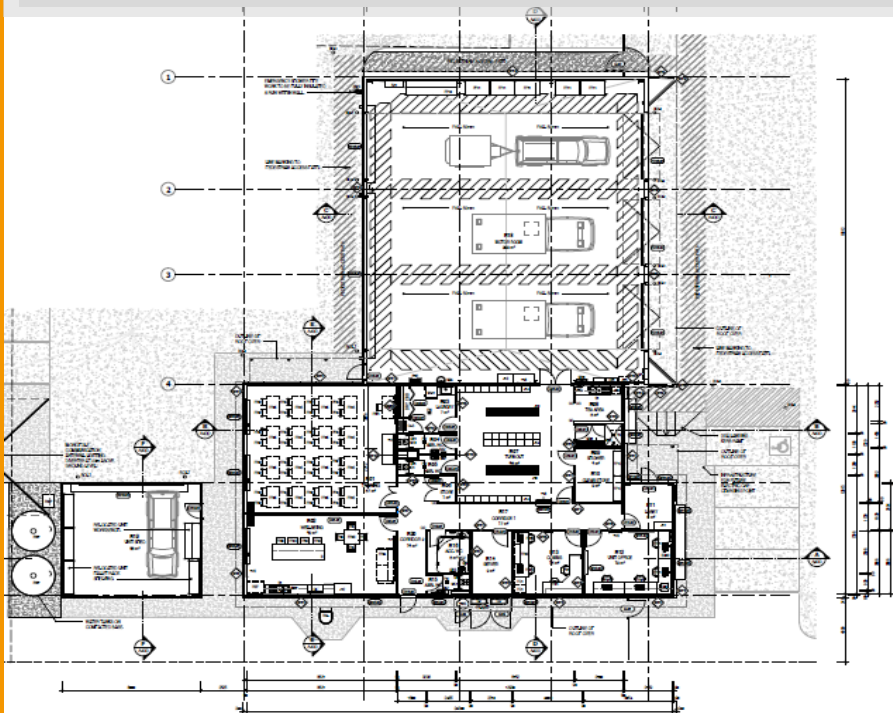
Schematic designs apply the relevant concept design (standardised) to a specific site once it has been identified. Factors including land size, street frontage, easements and planning overlays are considered, in addition to the functional requirements of the unit.

The schematic design (also known as a site plan) also considers site investigation reports (e.g. geo-technical, cultural, arborist etc.), which help to determine how the facility will be configured on the site and enables an initial cost estimate to be generated.

Who has input into the design process?

The schematic and detailed design processes are a collaborative approach between ESIA, VICSES HQ and your Regional Manager. Regional Managers will work closely with their respective units to ensure functional requirements are met, and critical issues addressed. The specific facility designs are overseen by the Project Control Groups, with approval required from the Sector Coordination Group (SCG).

Detailed design – example only
Confidential, not for distribution



Detailed design

The next phase is detailed design, which commences once a planning permit is issued, enabling any council requirements to be considered.

Detailed design develops the schematic into drawings, plans and specifications and includes everything from site excavation (civil works) to the type of door handles, lighting, power points and furniture required.

This process is very comprehensive and can take up to four months. Once approved by the SCG, the documentation is released through a Request for Tender to source a suitable builder to construct the facility.

Contact

esia@justice.vic.gov.au

Website

www.esia.vic.gov.au