

VICSES Chelsea

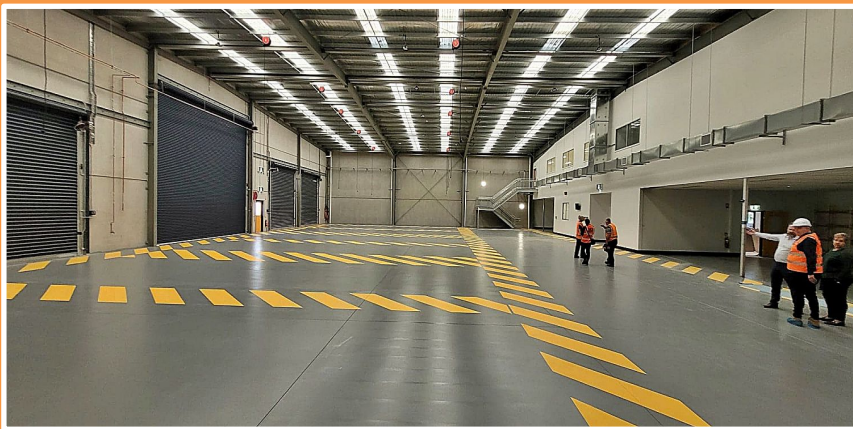
Update

October 2022



Project update

- Construction is nearing completion with recent works including:
 - Monopole installation
 - Power supply connection to main switch board.
 - Internal and commissioning works including epoxy flooring completed.
- Rectification works for soft spots in parking area is in progress.
- On 3 October 2022, a site walkthrough took place with volunteers, VICSES representatives and the local MP.



Next steps

- Complete external works including pavements, exterior paint, front gate installation and signage.
- Complete facility build and commence operational readiness in preparation for Unit move in.

This update is current at time of distribution, however due to unforeseen circumstances, changes may occur.

Project timeline:

1

Site identification
Completed

2

Site due diligence
Completed

3

Concept and schematic
design
Completed

4

Town planning approval
Completed

5

Detailed design
Completed

6

Procure and appoint
construction firm
Completed

7

Construction commenced
January 2022

8

Construction concludes
November 2022

9

Handover of facility
December 2022

Construction process

Once a builder has been appointed to construct a new VICSES facility, ESIA's project team plays an important role in managing the contract so that the construction phase runs as smoothly as possible.



Emergency Services Infrastructure Authority's (ESIA) role

During the construction of a new VICSES facility, ESIA's project team is responsible for a range of contract administration and management tasks, including:

- Reviewing the Contractor's Program and Plans (site management, traffic management, OH&S, Environmental Management Plan and commissioning / handover)
- Regular site visits and attending site meetings
- Responding to Contractor's requests for information, resolving technical queries with consultants and issuing of instructions to Contractor as required
- Managing the review and approval of Contractor submissions including samples, shop drawings, as-built drawings and operation and maintenance manuals
- Managing and administering contract variations
- Providing monthly reporting on progress on site
- Reviewing the Contractor's Program and Plans (site management, traffic management, OH&S, Environmental Management Plan and commissioning/handover)
- Regular site visits and attending site meetings
- Responding to Contractor's requests for information, resolving technical queries with consultants and issuing of instructions to Contractor as required
- Managing the review and approval of Contractor submissions including samples, shop drawings, as-built drawings.



How long will it take to build our new facility?

ESIA estimates that your new facility will take approximately ten months to construct. As with any construction project of this size, there may be some schedule impacts, however ESIA and your VICSES Regional Manager will keep you informed throughout the process. Extensions or refurbishments will take less time to complete.



What happens if the weather impacts the progress of the build?

Factors such as inclement weather are considered when the estimated project timeline is determined. However, there may be issues out of ESIA's control that mean the construction will take longer than anticipated.



Can we visit the site while it is under construction?

Construction sites are busy places. Many contractors work side-by-side and heavy vehicles come and go so there are a number of OH&S risks that must be considered. ESIA will endeavour to organise an opportunity for you to inspect the construction site at some stage.



Can we move into our facility as soon as construction has been completed?

Following practical completion and the certificate of occupancy commissioning of the facility must be undertaken before the unit is operational. This process ensures that new facilities and equipment are ready for occupancy and use, this process can take up to two months.



Contact: esia@justice.vic.gov.au



Website: www.csba.vic.gov.au