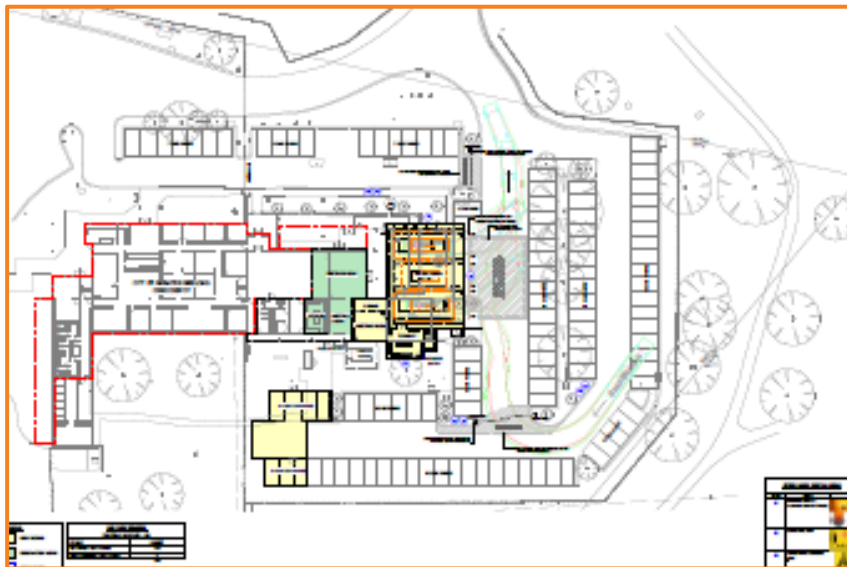


VICSES Corio

Update from the Emergency Services Infrastructure Authority

Project Update | June 2021

- The existing facility at 299 Anakie Road, Lovely Banks, will be extended and refurbished to provide a fit for purpose VICSES facility for the Corio volunteer members.
- The Schematic Design was approved by the Sector Coordination Group in February 2021.
- To obtain town planning approval, consultation is currently taking place with the landowner, City of Greater Geelong (CoGG).
- ESIA is working to address feedback received from CoGG relating to the Schematic Design solution.
- The outcomes of the design review will be presented to CoGG and VICSES.
- The project schedule will be updated upon resolution of CoGG's concerns.



VICSES – Corio – design workshop example (Confidential)

Next Steps

- Present Schematic Design review findings to CoGG and VICSES.
- Update project timeline based on outcome.
- Prepare design for town planning permit application.

This update is current at time of distribution, however due to unforeseen circumstances, changes may occur.

Project Timeline

Site Identification

Completed

Site due diligence

Initial reports completed

Concept, schematic and detailed design development

In progress

Town planning approval

Pending schematic design approval

Procure and appoint construction firm

Planning underway

Construction commences

Early 2022

Construction concludes

Late 2022

Handover of facility

Late 2022

Schematic and detailed designs

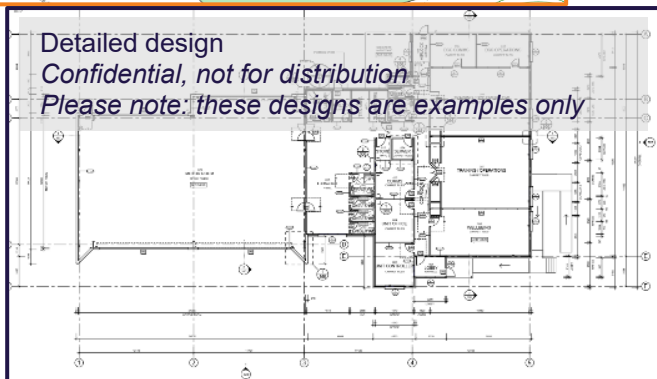
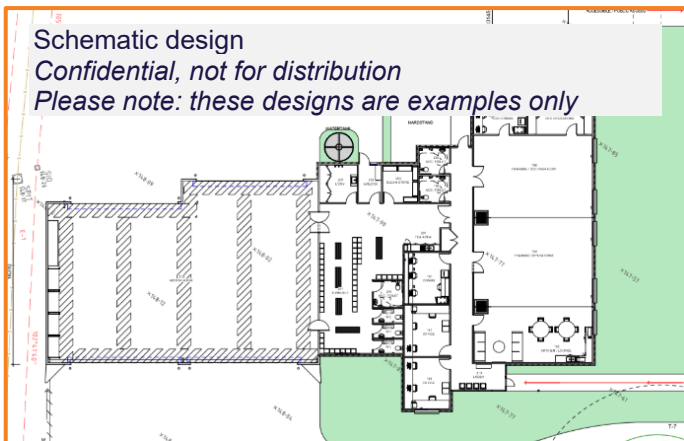
ESIA has previously explained concept designs, which are standardised layouts for all new VICSES unit facility types. However, not all VICSES units have the same responsibilities, so how do we accommodate these different requirements in your facility's design?

Schematic design

Schematic designs apply the relevant concept design (standardised) to a specific site once it has been identified. Factors including land size, topography, street frontage, easements and planning zones and overlays are considered, in addition to the functional requirements of the unit.

The schematic design also considers site investigation reports (e.g. geo-technical, cultural, arborist etc.), which help to determine how the facility will be configured on the site and is part of preparing an initial forecast cost for the new unit.

Once finalised, the schematic design provides documentation for issue as part of a planning permit application.



Who has input into the design process?

The schematic and detailed design processes are a collaborative approach between ESIA, VICSES HQ and your Regional Manager. Regional Managers will work closely with their respective units to ensure functional requirements are met, and critical issues addressed. The specific facility designs are overseen by the Project Control Groups, with approval required from the Sector Coordination Group (SCG).

Detailed design

The next phase is detailed design, which commences once a planning permit is issued, enabling any council requirements to be incorporated into the design.

Detailed design develops the schematic into drawings, plans and specifications and includes everything from site excavation (civil works) to the type of door handles, lighting, power points and furniture required.

This process is very comprehensive and can take up to four months. Once approved by the SCG, the documentation is released through a Request for Tender to source a suitable builder to construct the facility.

Contact

esia@justice.vic.gov.au

Website

www.esia.vic.gov.au